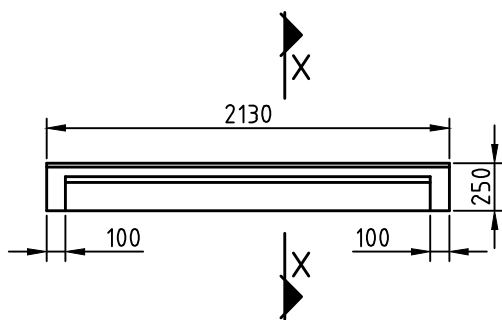
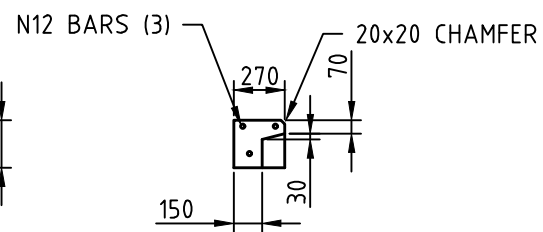


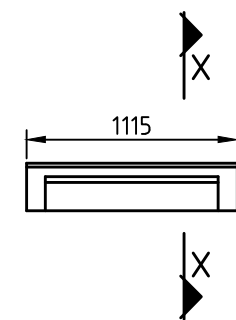
DETAIL A



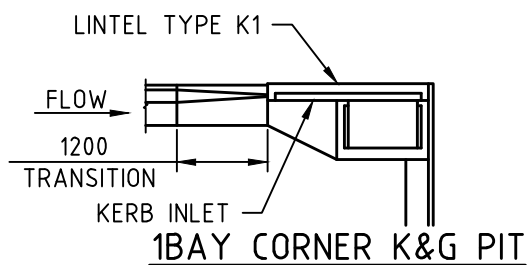
ELEVATION K1



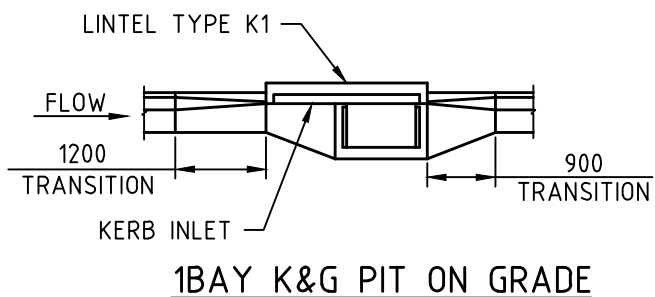
SECTION X-X



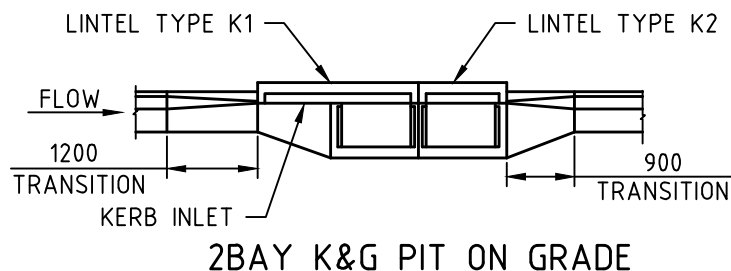
ELEVATION K2



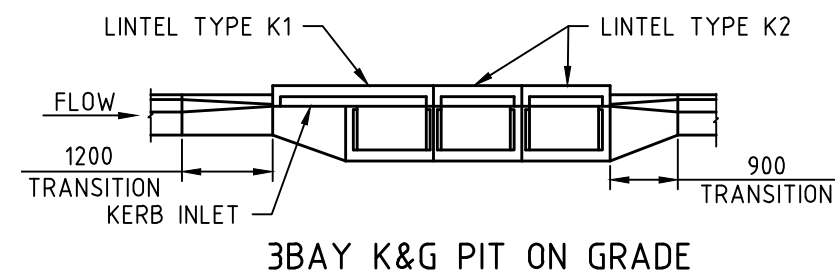
1BAY CORNER K&G PIT



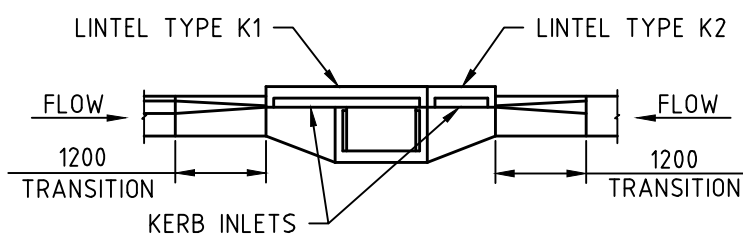
1BAY K&G PIT ON GRADE



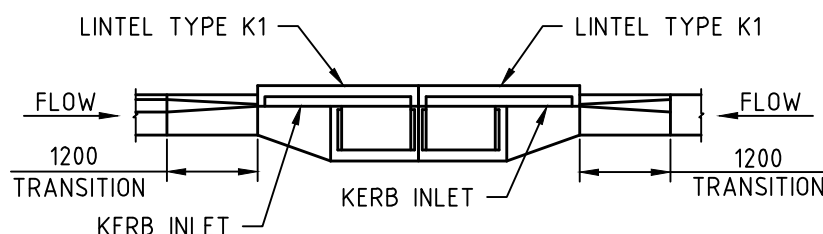
2BAY K&G PIT ON GRADE



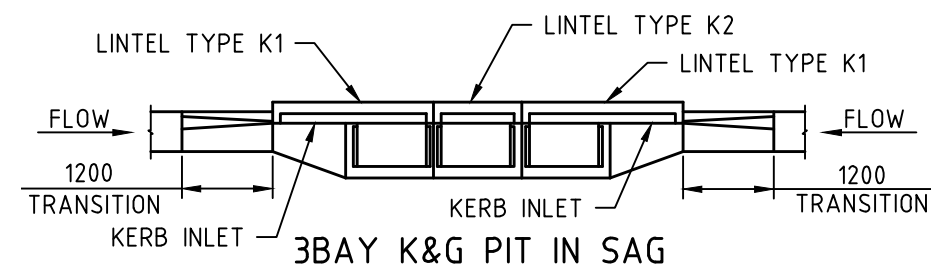
3BAY K&G PIT ON GRADE



1BAY K&G PIT IN SAG



2BAY K&G PIT IN SAG



3BAY K&G PIT IN SAG

PIT ARRANGEMENT DETAILS

NTS

NOTE: TRANSITIONS ARE SHOWN FOR LAYBACK KERB



ALICE SPRINGS TOWN COUNCIL

CNR TODD STREET AND GREGORY TERRACE
 PHONE: (08) 89 500 500
 FAX: (08) 89 530 558

SUBDIVISION AND DEVELOPMENT GUIDELINES

SIDE ENTRY PIT - PRECAST LINTEL AND ARRANGEMENT DETAILS

REV	DESCRIPTION	DATE	INITIALS
C	DESIGN ISSUE	05.02.18	ASTC

DRAWING NUMBER: ASTC - 109

AMENDMENT: C

DESIGNED: MP
 SURVEYED: N/A
 DRAWN: MR/TJK

SCALE: NOT TO SCALE
 DATE: FEB 2018